



"Ok here goes...  
deep breath in...  
deep breath out..."



## Home Smart Clinic

### Primary care from home with no compromises

Traditional audio/video telehealth solutions leave the home ill-equipped to deliver care comparable to an in-person visit. This Home Health Delivery Gap™ leaves our daily lives disconnected from healthcare.

We believe there is no reason why meeting a doctor remotely from home should be any less effective than seeing one in the clinic. Solving the Home Health Delivery Gap™ means lower TCC, higher quality of care, better healthcare outcomes, and higher member satisfaction.

The Home Smart Clinic enables remote physical exams by clinicians, regardless of where you are or what condition you have - acute or chronic. These exams are coupled with AI diagnostic support to assist clinicians, and behavioral science blueprints to maximize adoption and utilization. The Home Smart Clinic supports families across different populations - no matter whether they have CFI insurance or are part of Medicaid or CHIP programs.

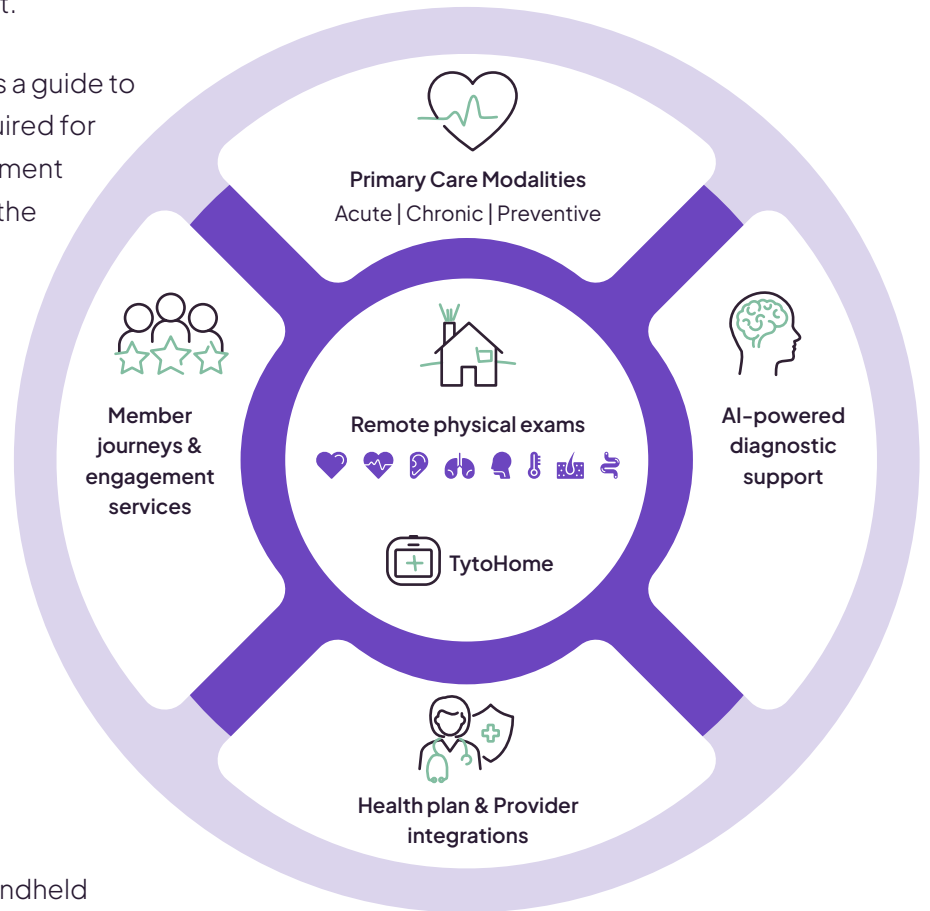
It removes the barriers that have prevented the home from being a place where quality primary care can be consumed. Primary care can now be delivered and consumed from home, with no compromises.

# What is the Home Smart Clinic?

The Home Smart Clinic solutions include the comprehensive range of elements required by healthcare organizations to launch a truly successful virtual care program with no compromises. By offering remote physical exams, coupled with AI-powered diagnostic support, and member journeys and engagement services tailored for specific cohorts, TytoCare's Home Smart Clinic solutions enable programs that work for health plans, healthcare providers, and the families they support.

The Home Smart Clinic blueprint acts as a guide to outline the combination of factors required for successful solution rollouts. Each element of the blueprint is an essential part of the full Home Smart Clinic solution.

## Home Smart Clinic Blueprint



### Remote physical exams

TytoCare's FDA-cleared handheld solution enables clinicians to conduct high-quality medical exams remotely and make accurate diagnoses based on real patient data. The TytoCare solution can accurately listen to heart and lung sounds, look into the ear and throat, and measure blood pressure, blood oxygen levels, weight, and more.



### AI-powered guidance and diagnostic support

Tyto Insights™ use large amounts of continuously gathered and anonymous clinical and usage data to drive AI-powered guidance and diagnostic support capabilities.

#### Guidance support

AI technology guides patients when conducting exams, helping them place the device's modular tips (stethoscope, otoscope, etc.) in the right place and at the correct angle to accurately capture health data.

#### Diagnostic support

AI-enabled diagnostic support analyzes gathered data, detecting conditions such as lung wheezes and more.



## Primary care modality enabler

TytoCare supports all primary care modalities, allowing for the full spectrum of primary care.

**Acute care** - providing rapid care for common, acute conditions.

**Chronic condition management** - enabling patients to track their medical conditions outside of the clinic on a regular, ongoing basis.

**Preventive care** - making remote quality care a valuable part of preventive care programs.



## Health plan and provider integrations

TytoCare's software connectors allow for streamlined integrations with customer systems, including Electronic Health Records, proprietary virtual-first mobile apps, and more. TytoCare also supports a variety of provider models, including doctors in the cloud, community PCPs, or your own providers.



## Member journeys & engagement services

Successful virtual care programs require behavioral change by health plans, clinicians, and families in order to succeed. We leverage our knowledge from successful deployments with partners across the globe, together with behavioral science insights, to build Tyto Engagement Labs™. TytoCare's comprehensive library of blueprints, advisory consulting services, and robust, full-stack marketing engine are tailored to each specific program and cohort, resulting in impressive utilization and adoption rates for all our partners.

# Serving different populations and condition types

TytoCare's Home Smart Clinic is designed to serve different populations, and support a variety of conditions and care modalities. The same elements that can support a CFI program for acute care can support a Medicaid program for wellness or a CHIP program for asthmatic patients. By designing each element with these different populations and conditions in mind, the Home Smart Clinic is able to provide offerings tailored to each of these use cases.

## Join the new age of primary care from home, with no compromises.

Make the home a place for families to access quality primary care they can trust with no compromises, no inconvenience, and no inefficiencies.

